

Performance has a name



**The CNC for all applications:**

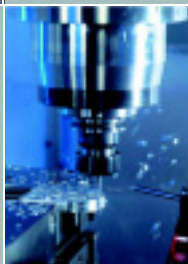
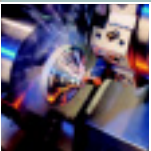
- Easy to operate and to program
- Cycle and contour support
- Easy entry and migration for all users
- Easy setting up of tools and workpieces
- Ethernet onboard
- Clear structured program administration by commercially available CF card

**The digital controller for higher productivity:**

- Fast, precise and reliable
- Controls up to 4 axes and 1 spindle or 3 axes, 1 spindle and 1 auxiliary spindle (rotating tool)
- Perfect for turning and milling applications, also for small series productions
- Complete structure in one compact operator panel
- Execution of large programs by network or CF card maximum speed
- Without batteries and fan – maintenance-free
- Suitable for telediagnosics

# sinumerik

## 802D sl



**SIEMENS**

# SINUMERIK 802D sl

Offers you flexibility and productivity when drilling, turning and milling

## Technical specifications

- 5 digital drives (up to 2 spindles or 1 C-axis)
- 10,4" TFT flat screen
- 1 MB memory (Version plus)
- 3 MB memory (Version pro)
- Frame technology
- Rotary axis
- Look ahead
- Handwheel function
- Up to 64 tools (Version plus)/ up to 128 tools (Version pro)
- Ethernet onboard (Version pro)
- Commercially available CF card as memory medium, accessible via operator panel
- Compressor functions (Version pro)

## Convenience as a standard feature

- Integrated pocket calculator
- Part counter
- Program operating time counter
- Onboard help (complete context-sensitive operating and programming instructions)
- Onboard language change (always two languages onboard, large supply of languages contained in scope of delivery)
- PLC program templates for fast startup
- Graphical PLC status indication
- Tool life and operation monitoring

## The SINUMERIK 802D sl offers you many advantages:

### ... easy setup of tools and workpieces like ShopMill/ShopTurn

- Manually by scratching
- With touch trigger probe
- With dynamometer
- Graphical support

### ... graphical contour programming

- Fundamental contour elements enabling a contour to be created quickly and easily

### ... graphical support for cycles

- Drilling:  
Centering  
Deep hole drilling  
Boring  
Boring with stop  
Tapping with/without compensating chuck (rigid tapping)
- Milling:  
Face milling  
Deep hole drilling  
Thread cutting with/without compensating chuck  
Row of holes – circle/line  
Drilling, sinking  
Milling of pockets, grooves and circular pockets
- Turning:  
Grooving, undercut  
Stock-removal  
Thread cutting  
Drilling, counter sinking  
Deep hole drilling  
Tapping with/without compensating chuck  
Boring

### ... graphical simulation

- Line graphic for programming and editing check

### ... universally applicable

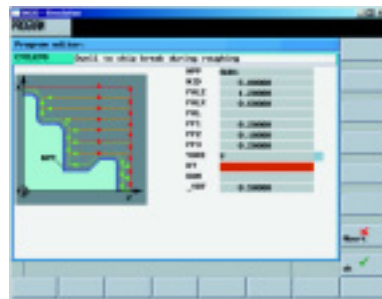
- Simple teleservice by RCS802
- Processing part programs according to ISO standard
- With instruction to switch to other G-codes and back to ISO-standard
- Ethernet onboard for network

### ... commercially available CF card as memory medium

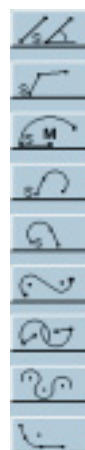
- Faster execution, saving and loading of programs
- Complete serial startup
- Part program memory in any size
- Memory capacity of CF card (type 1) free selectable



Setup function



Graphical support of cycles



Contours

The information provided in this brochure contains descriptions or characteristics of performance which in case of actual use do not always apply as described or which may change as a result of further development of the products. An obligation to provide the respective characteristics shall only exist if expressly agreed in the terms of contract. Availability and technical specifications are subject to change without notice.

You can find information about this product at Internet website:



<http://www.siemens.com/sinumerik802>

You can find your local partner under:

<http://www.siemens.com/automation/partners>

or just mail to our infobox:



[802.info@erlf.siemens.de](mailto:802.info@erlf.siemens.de)